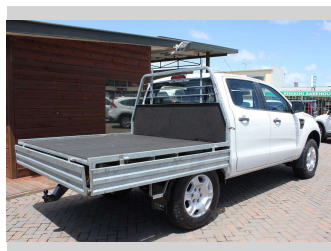
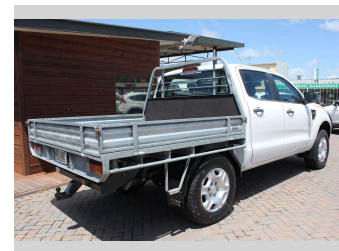
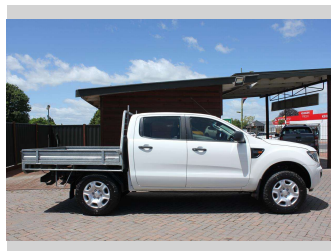


2014 Ford Ranger TD XL DC W/S 3.2D/6M



Purchase Price

Includes GST, Registration & Licensing

\$19,995

Indicative repayments

\$167.74 per week*

Based on a 156 week term & no deposit.
Total repayments (156) = **\$26,166.75**



1,2 or 3 Year Mechanical Warranty Available



Top features

- » 1 YEAR VTNZ WOF
- » 17" Factory Alloy Whee...
- » Air Bag(s)
- » Air Conditioning
- » Audio Control on Steer...
- » Aux Input
- » Central Locking
- » Central Locking
- » Electric Mirrors
- » Electric Windows
- » Flat Deck
- » Remote Central Locking
- » Tailgate
- » Towbar
- » USB Input

Body Style

4 door, Ute

Odometer

224,444 km

Engine

3199 cc, 5 Cylinder Turbo

Fuel Type

Diesel

Transmission

6-Speed Manual

Wheels

17", Factory Alloy Wheels

VIN

MNAUMFF50EW281208

Interior

Dark Grey, Cloth

Safety

-

Reg No.

HRU861

Ext Colour

White

History

NZ New, 4 owners

Seats

5 seats, Cloth

CO2 Emissions

-

Energy Economy

-

Stock ID: 8562



Town and Country Motors Waikato Limited | Phone 07 871 8183 | Email
les@townandcountrymotors.co.nz
41 Lyon Street, Kihikihi, Te Awamutu 3800, New Zealand
www.townandcountrymotors.co.nz

* Town and Country Motors Waikato Limited is not a lender nor a financial adviser. Any amounts displayed should not be seen as an offer of finance or taken as financial advice. The interest rate, fees and loan term used in this calculation may not actually represent those available from lenders. Actual interest rates, fees and loan terms will vary per lender and are typically based on an assessment of your credit risk and responsible lending criteria. Any repayment amounts displayed are indicative only and have been calculated using several other indicative inputs. The interest rate used in this calculation is an arbitrary 15.95%, however exact interest rates vary per lender. The term of the loan used in this calculation is 156 week. Exact terms available vary per lender although options typically include 6, 12, 18, 24, 36, 48 and 60 months. This calculation also includes two typical mandatory fees charged by lenders. These are an account admin fee of \$9.00 per month (other payment frequencies may be available) and a one-off establishment fee of \$519.00. Typically, this fee can be paid upfront or, as in this calculation, be capitalised over the contract term, ie. included in the loan amount. These fees can vary per lender and other non-mandatory fees and charges may also apply. The total amount of repayments has been calculated by multiplying 156 weekly repayments (based on a 156 week term) by the weekly repayment amount of \$167.74 which equals \$26,166.75. This calculator does not consider any of your own personal circumstances and we strongly suggest you seek budgeting advice prior to committing to any loan contract. Responsible lending criteria and lender terms and conditions will likely apply to any finalised loan contract. Proof of security and/or vehicle insurance may also be required before proceeding.

Vehicle data updated 23 December 2025 13:09