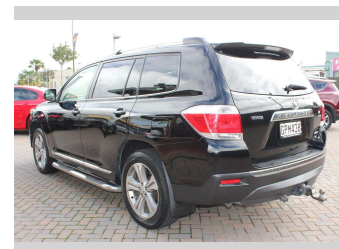
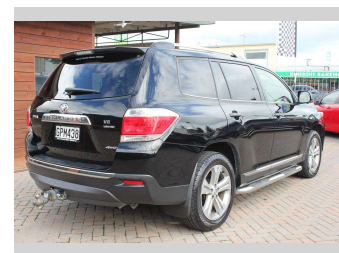



2012 Toyota Highlander 3.5P LTD 4WD WGN5 5A




Purchase Price **\$14,995**
Includes GST, Registration & Licensing

Indicative repayments
\$127.36 per week*
Based on a 156 week term & no deposit.
Total repayments (156) = **\$19,867.94**



1,2 or 3 Year Mechanical Warranty Available



ASSURANT®

Top features

- » 1 Year WOF
- » Air Conditioning
- » Anti-Lock Braking Syst...
- » Audio Control on Steer...
- » AWD (All Wheel Drive)
- » Bluetooth Audio
- » Brake Assist (BA)
- » Brand New WOF
- » Central Locking
- » Chain Driven Engine
- » Climate Control
- » Cruise Control
- » Down Hill Assist
- » Down Hill Assist
- » Dual Zone Climate Air...
- » Electric Drivers Seat
- » Electric Mirrors
- » Electric Mirrors

Body Style
5 door, Station Wagon

Odometer
249,867 km

Engine
3456 cc, V6

Fuel Type
Petrol


Transmission
Automatic, 4WD

Wheels
19", Factory Alloy Wheels

VIN
JTEES41AX02210426

Interior
Black, Leather

Safety



Based on 2025 UCSR rating for 07-13 models

Reg No.
GPM438

Ext Colour
Black

History
NZ New, 3 owners

Seats
7 seats, Leather

CO2 Emissions
☆☆☆☆☆☆
310 grams/km

Energy Economy
☆☆☆☆☆☆
Annual fuel cost of \$5,060
12.9L per 100km

Cost per year is an estimate based on petrol price of \$2.80 per litre and an average distance of 14000 km. Emissions and Energy Economy figures standardised to 3P WLTP.

Stock ID: 8622



Town and Country Motors Waikato Limited | Phone 07 871 8183 | Email
les@townandcountrymotors.co.nz
41 Lyon Street, Kihikihi, Te Awamutu 3800, New Zealand
www.townandcountrymotors.co.nz

* Town and Country Motors Waikato Limited is not a lender nor a financial adviser. Any amounts displayed should not be seen as an offer of finance or taken as financial advice. The interest rate, fees and loan term used in this calculation may not actually represent those available from lenders. Actual interest rates, fees and loan terms will vary per lender and are typically based on an assessment of your credit risk and responsible lending criteria. Any repayment amounts displayed are indicative only and have been calculated using several other indicative inputs. The interest rate used in this calculation is an arbitrary 15.95%, however exact interest rates vary per lender. The term of the loan used in this calculation is 156 week. Exact terms available vary per lender although options typically include 6, 12, 18, 24, 36, 48 and 60 months. This calculation also includes two typical mandatory fees charged by lenders. These are an account admin fee of \$9.00 per month (other payment frequencies may be available) and a one-off establishment fee of \$519.00. Typically, this fee can be paid upfront or, as in this calculation, be capitalised over the contract term, ie. included in the loan amount. These fees can vary per lender and other non-mandatory fees and charges may also apply. The total amount of repayments has been calculated by multiplying 156 weekly repayments (based on a 156 week term) by the weekly repayment amount of \$127.36 which equals \$19,867.94. This calculator does not consider any of your own personal circumstances and we strongly suggest you seek budgeting advice prior to committing to any loan contract. Responsible lending criteria and lender terms and conditions will likely apply to any finalised loan contract. Proof of security and/or vehicle insurance may also be required before proceeding.